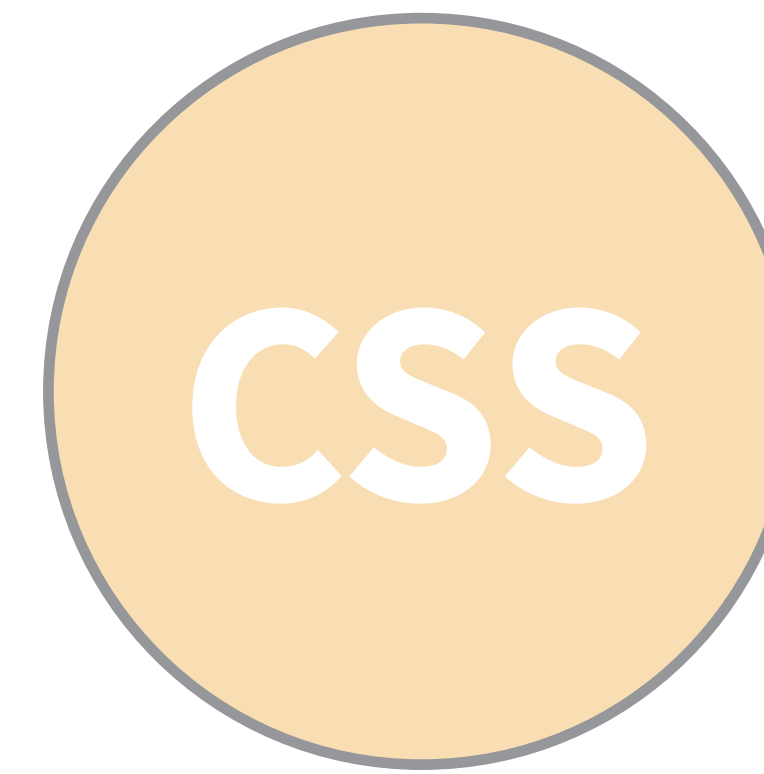


There are two main kinds of sewer systems in the District of Columbia and within the Rock Creek East II Livability Study Area: the Municipal Separate Storm Sewer System (MS4) and the Combined Sewer System (CSS).



MUNICIPAL SEPARATE STORM SEWER SYSTEM

The MS4 system carries the stormwater runoff directly into our waterways without mixing with wastewater, which uses a separate pipe that connects with Blue Plains, the District's regional wastewater treatment plant.



COMBINED SEWER SYSTEM

The CSS system carries stormwater runoff mixed with wastewater to Blue Plains. Overflows from heavy rainfall events are carried directly into our waterways.

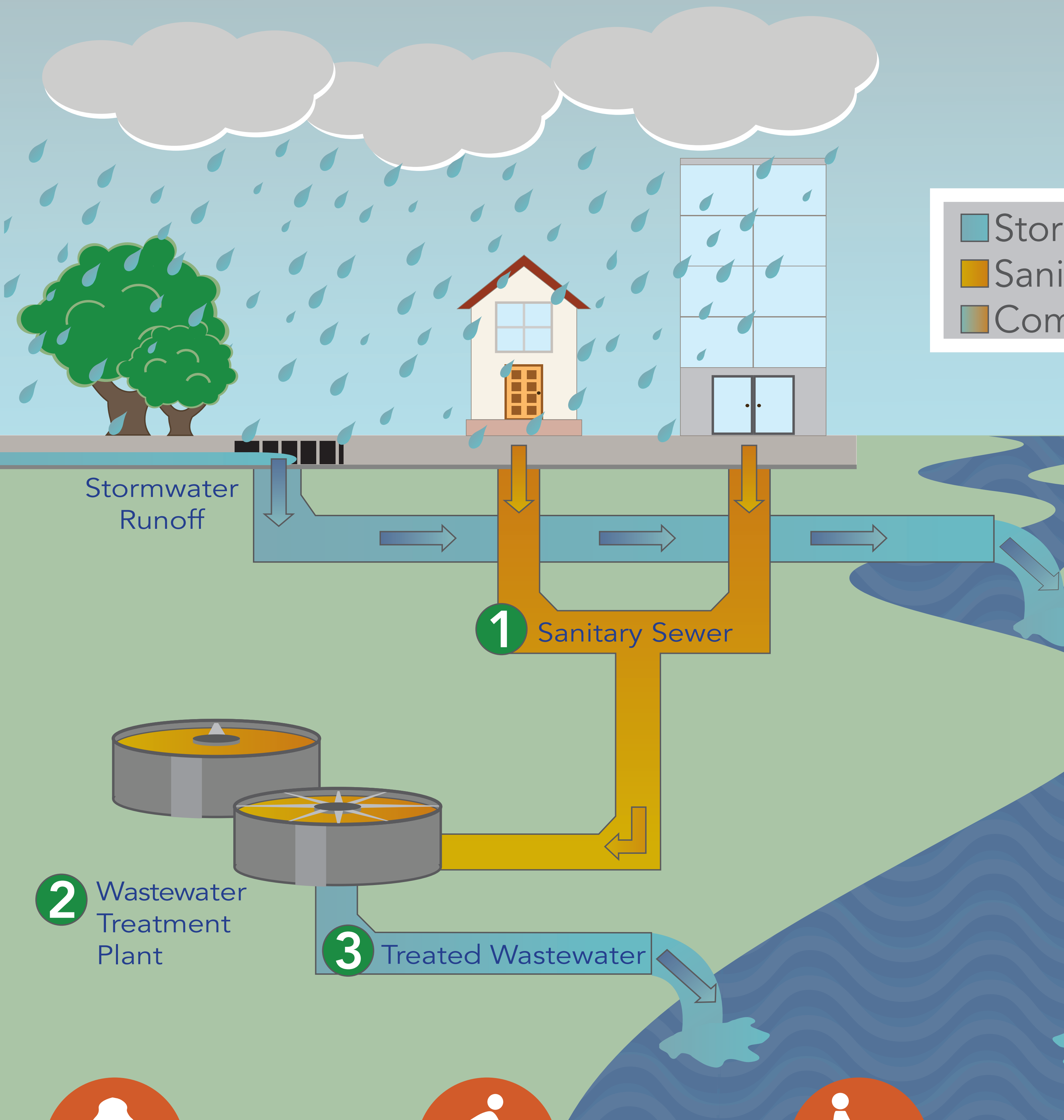


DIRECT DRAINAGE

Stormwater in areas with direct drainage is carried directly from the ground to our waterways.

MS4 MUNICIPAL SEPARATE STORM SEWER SYSTEM

This system uses separate pipes for sanitary sewage and stormwater flow



CSS COMBINED SEWER SYSTEM

This system uses the same pipes for sanitary sewage and stormwater flow

